

# Marine Protected Areas in the Seas around Scotland: Conserving Scotland's seas for both people and nature





# Presentational overview:

## The UK MPA network

## Scottish MPA Project

Network vision and principles

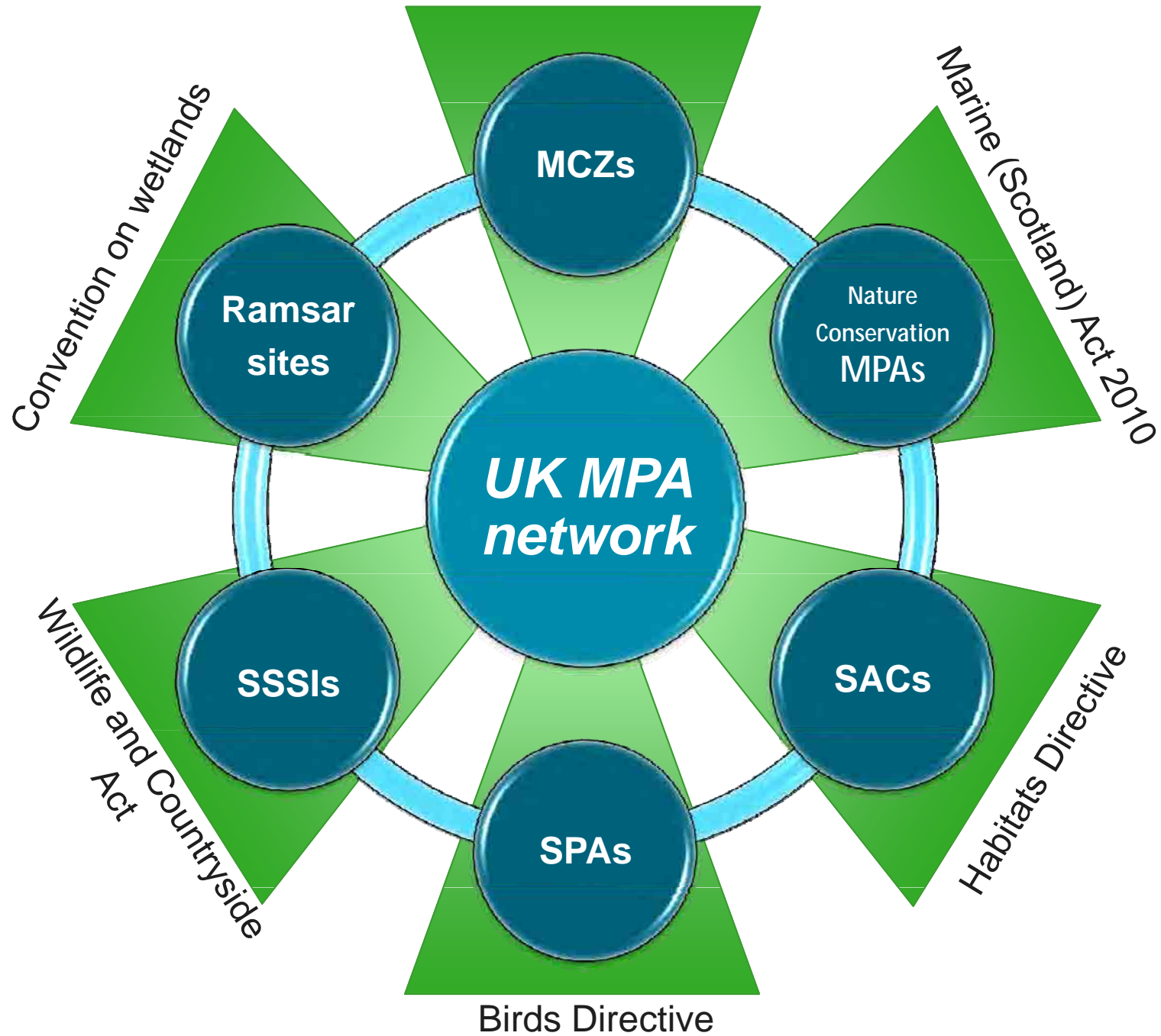
Site selection process

## Data sources

Example outputs

**Working with MASTS to improve our scientific information-base**

Marine and Coastal Access Act 2009

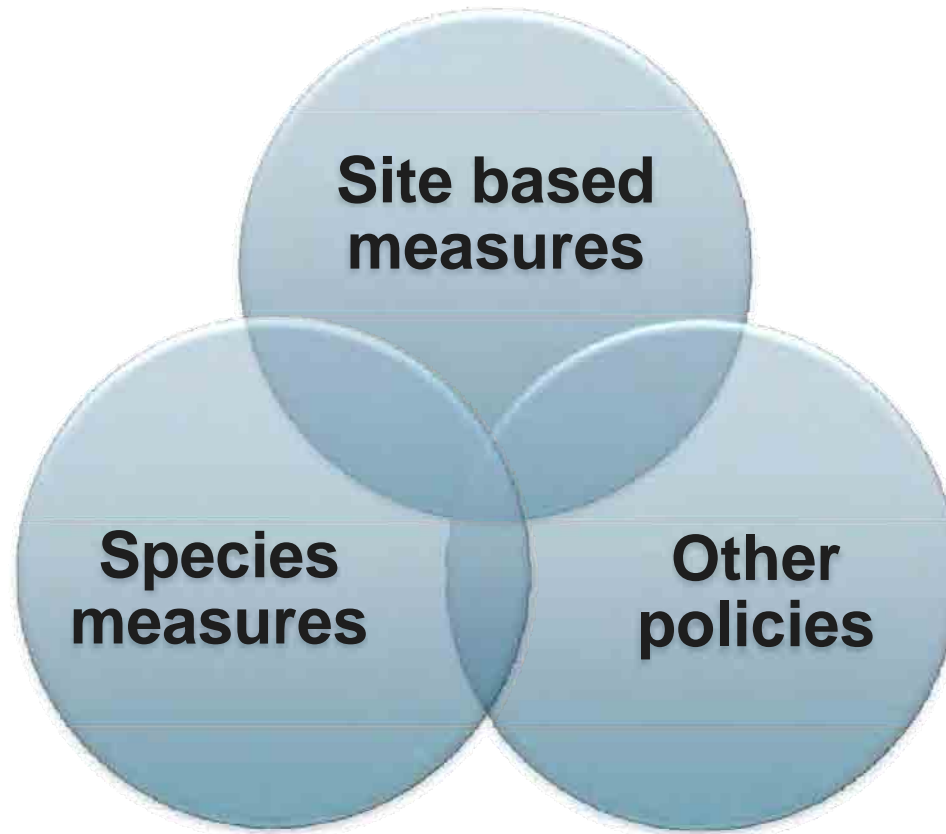


## Scottish Government's vision:

***“Clean, healthy, safe, productive and biologically diverse oceans and seas, managed to meet the long-term needs of both people and nature“***

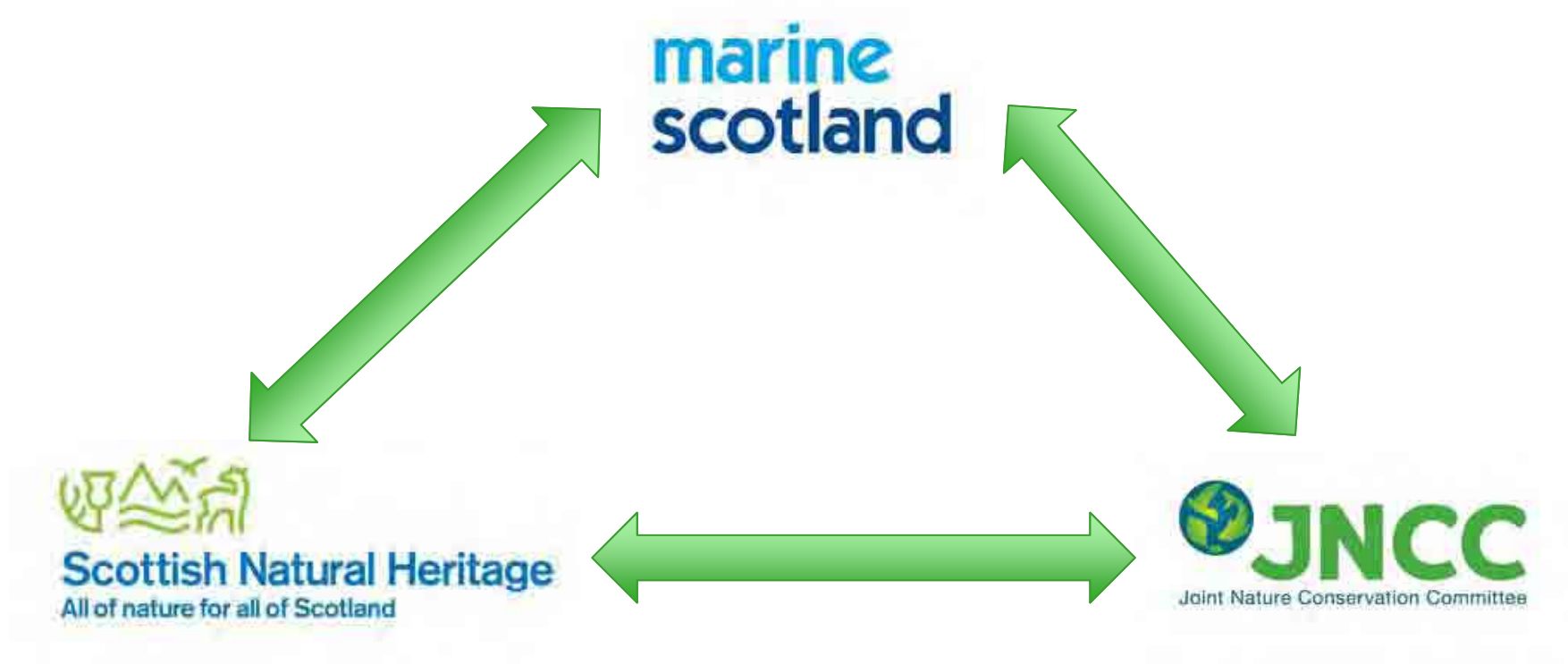


# A 'three-pillar' approach to effective marine nature conservation



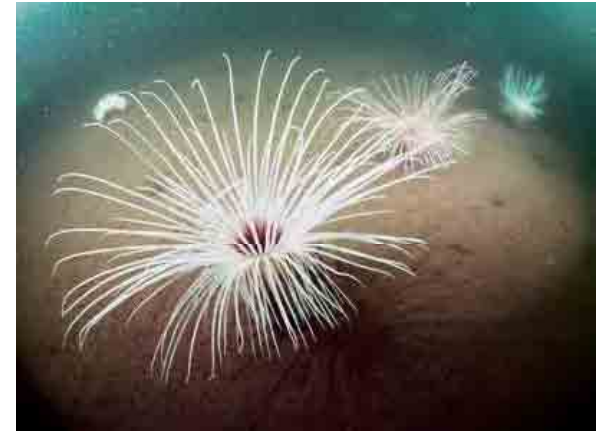
Conservation action underpinned by a list of 'Priority Marine Features' (PMFs).  
Features for which MPAs are appropriate are called 'MPA search features'

# The Scottish MPA Project:



To provide advice to Scottish Ministers on where MPAs should be

# MPA search features:



# MPA network vision and principles:

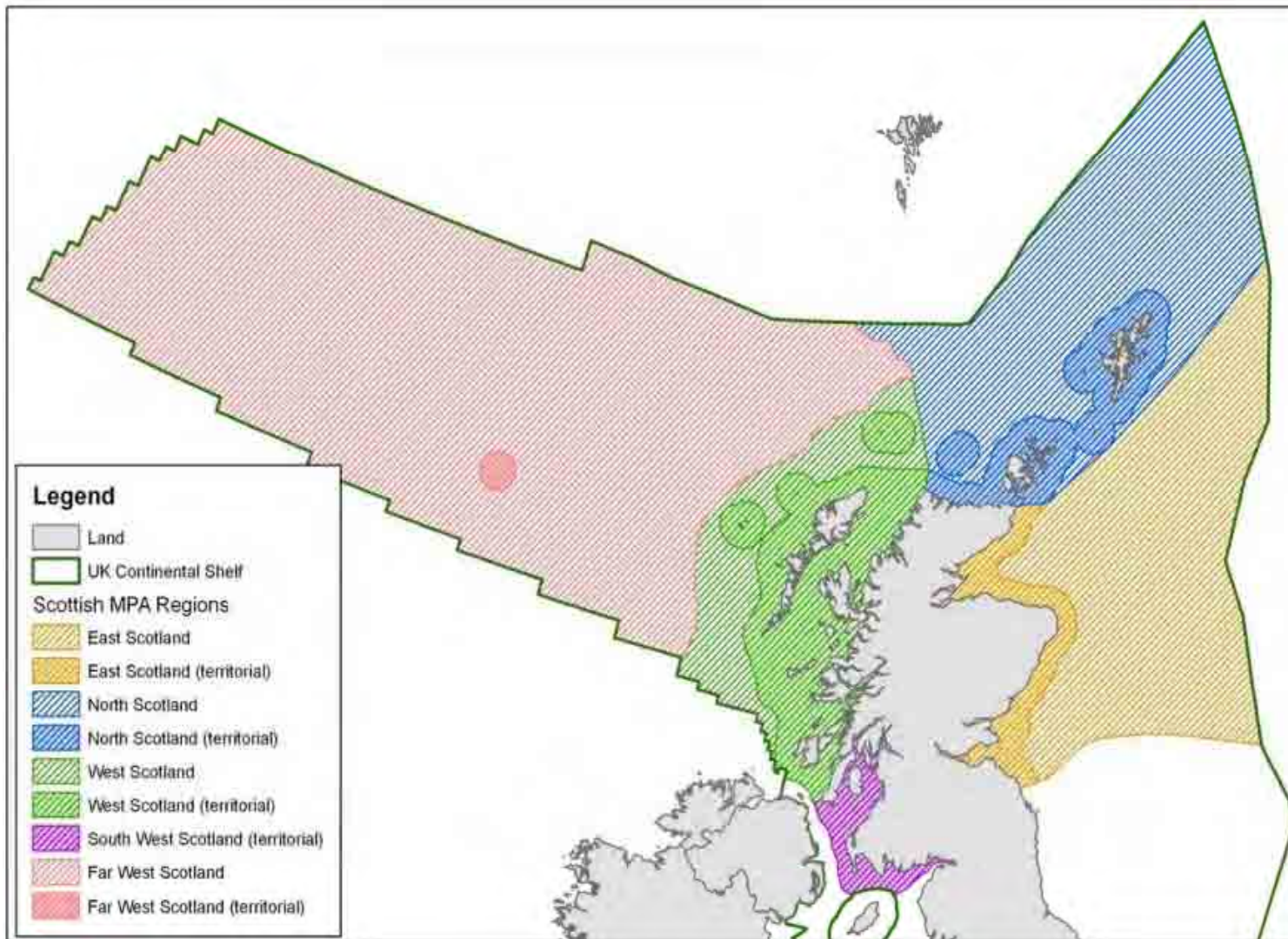
- ❑ **Scottish MPA Site Selection Guidelines**
  - ❑ Science-led approach
  - ❑ Opportunities for stakeholder engagement
  
- ❑ **Network principles:**
  - ❑ Representativity
  - ❑ Replication
  - ❑ Connectivity
  - ❑ Range of protection levels
  - ❑ Best available evidence
  
- ❑ **Site principles:**
  - ❑ Coherence
  - ❑ Viability

# MPA network vision and principles:

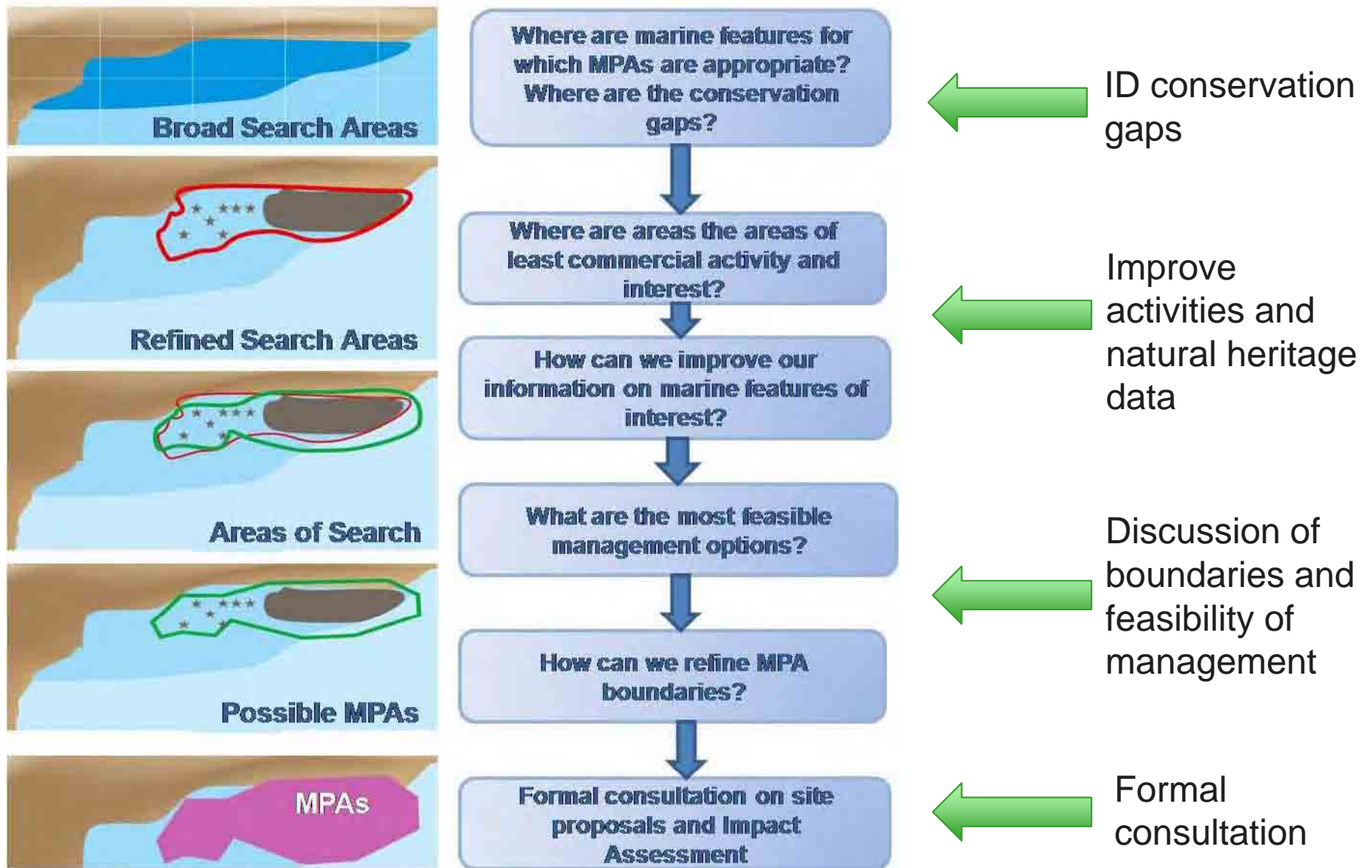
## Further considerations

- Prioritising areas of high diversity – least damaged/most natural
- Inclusions of features needing recovery
- Prioritising sites with multiple search features
- Considering the contribution of other spatial measures as contributing to the network
- Geodiversity interests

# Nature Conservation MPA Selection Process:



# Nature Conservation MPA Selection Process:



# Data sources:

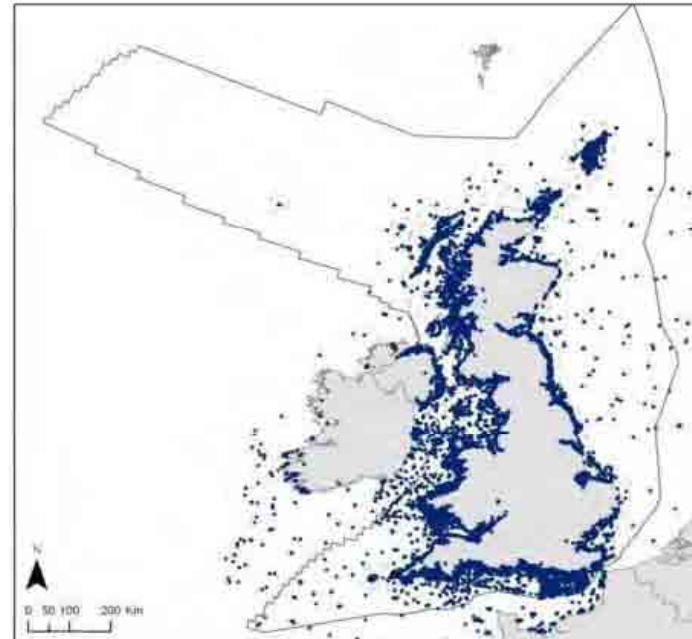
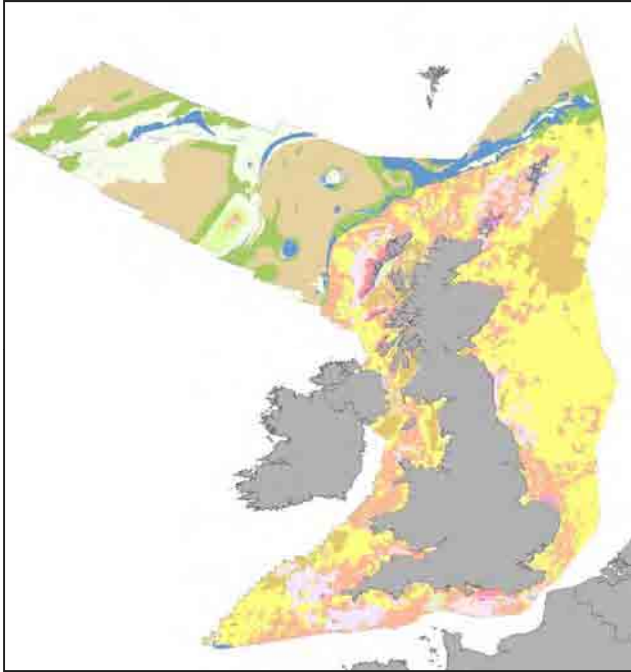
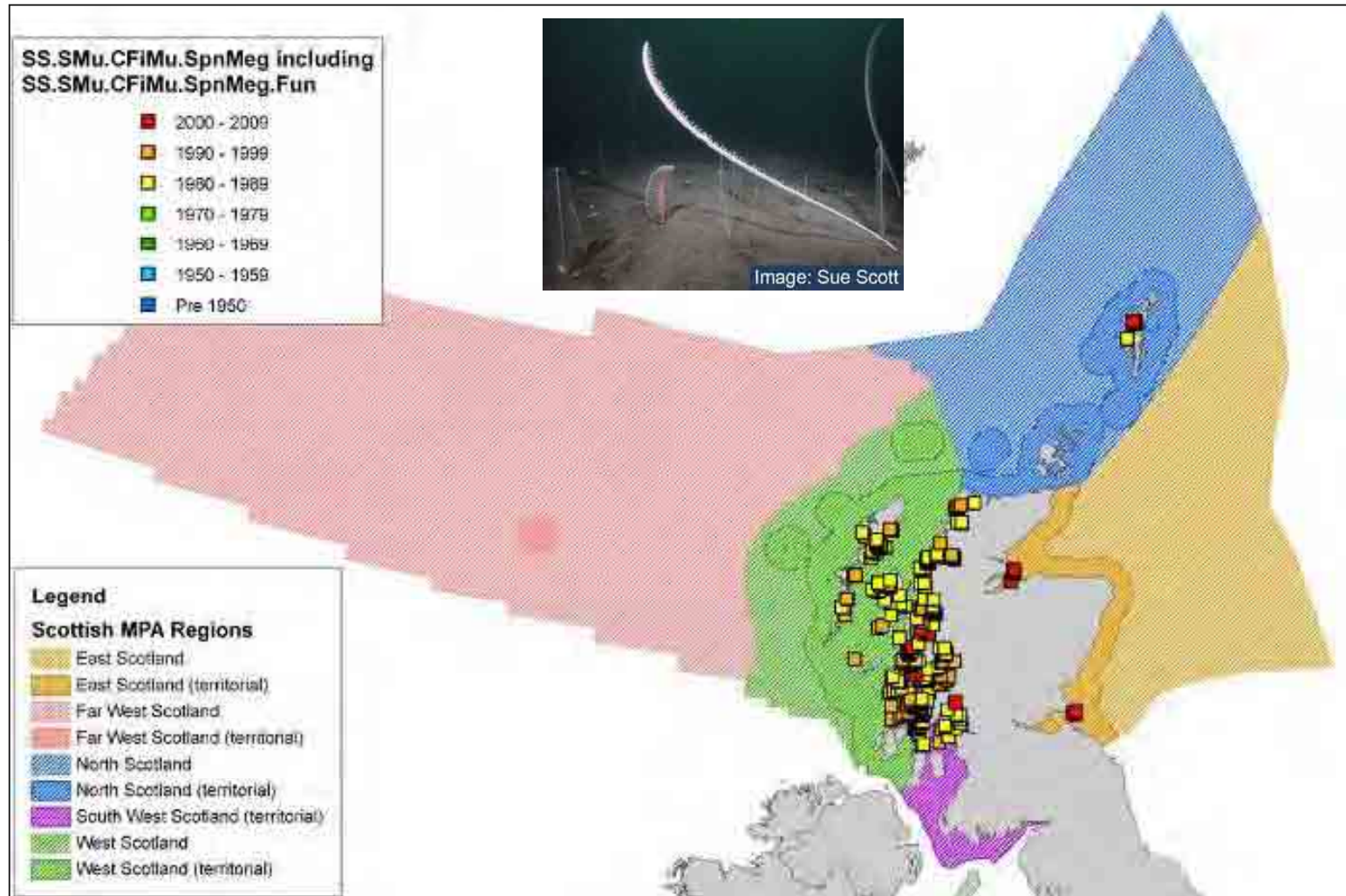
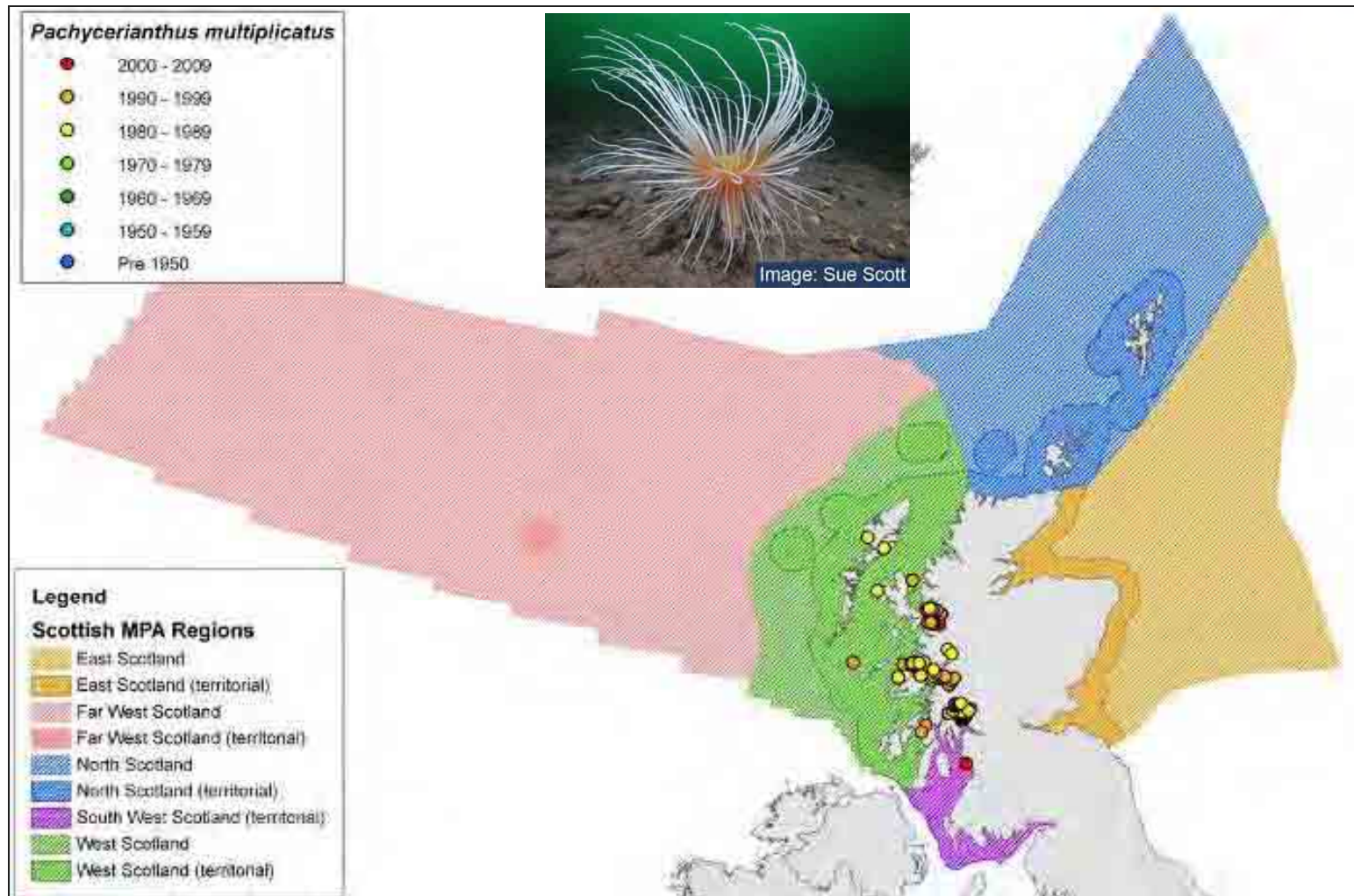


Image: Paul Kay

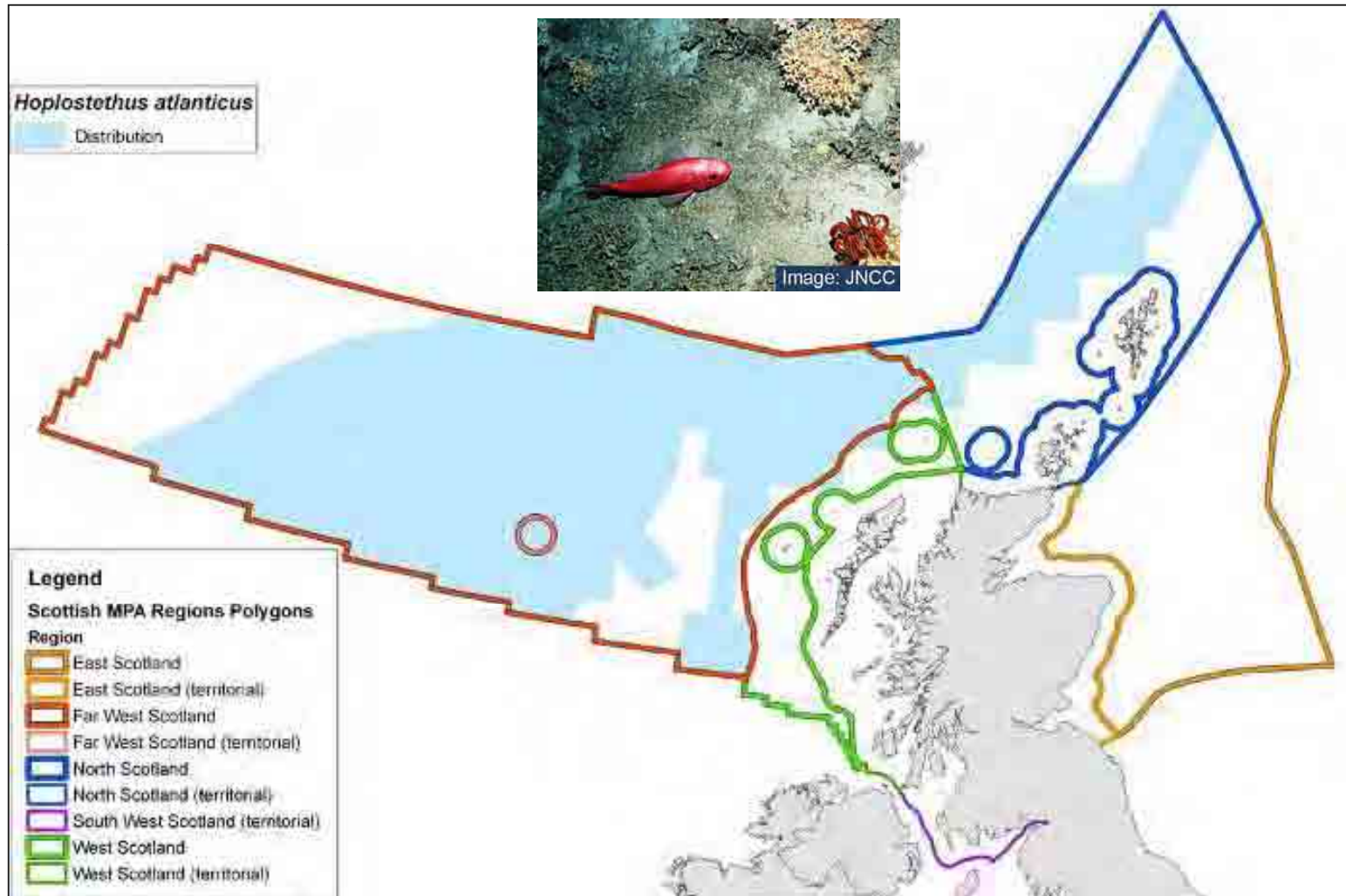
# Example: Seapens and borrowing megafauna



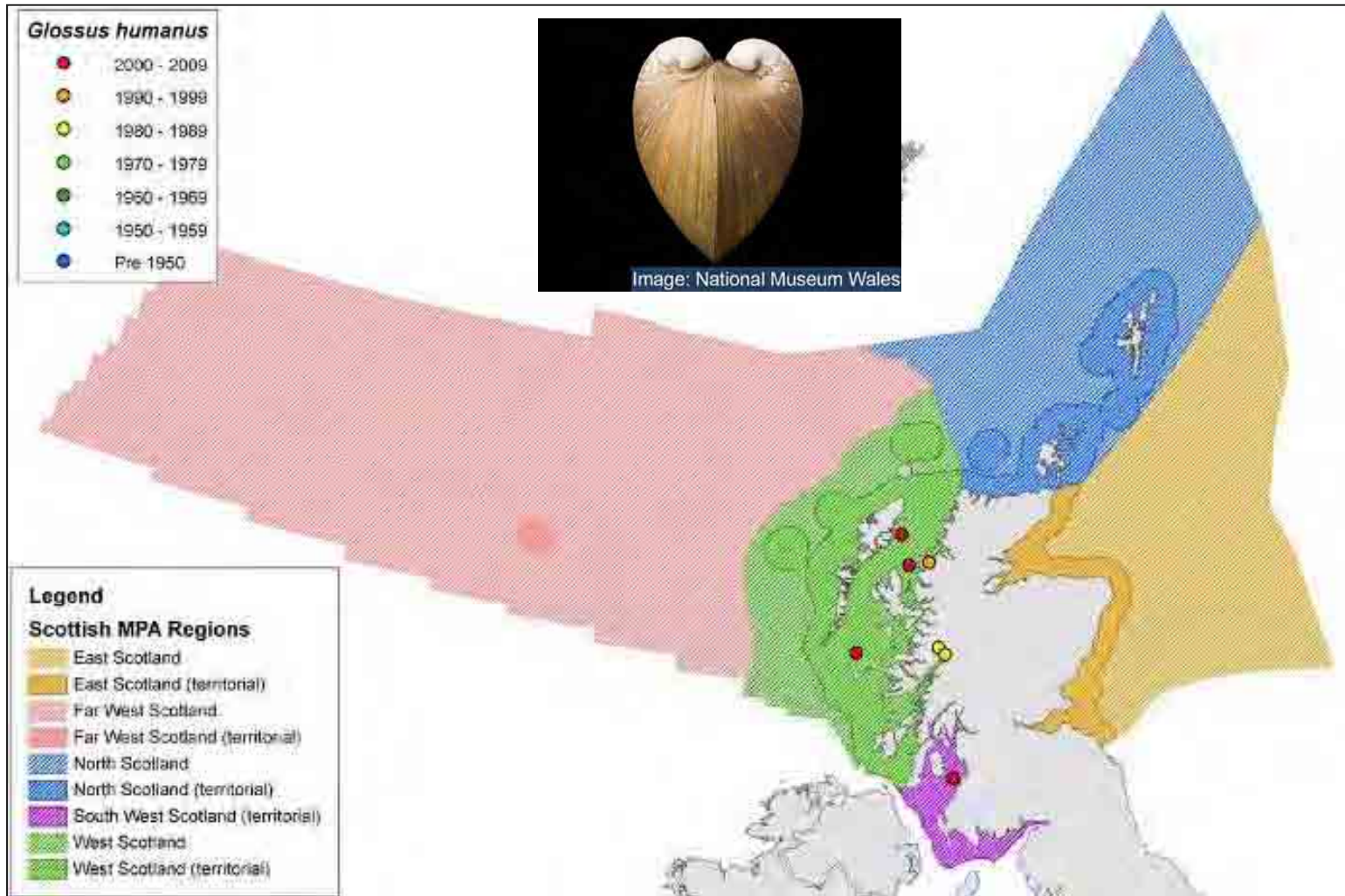
# Example: Fireworks anemone



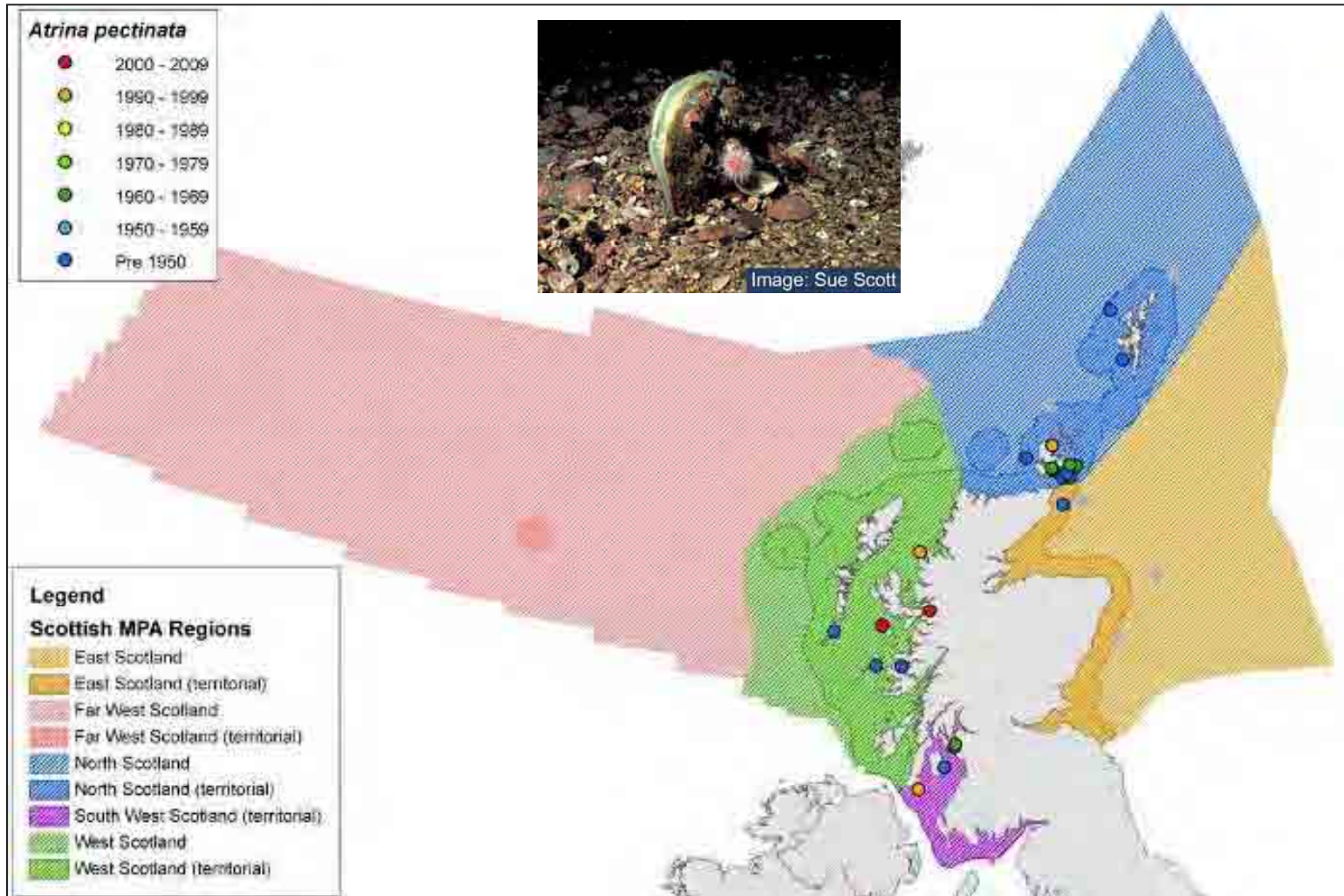
# Example: Orange roughy



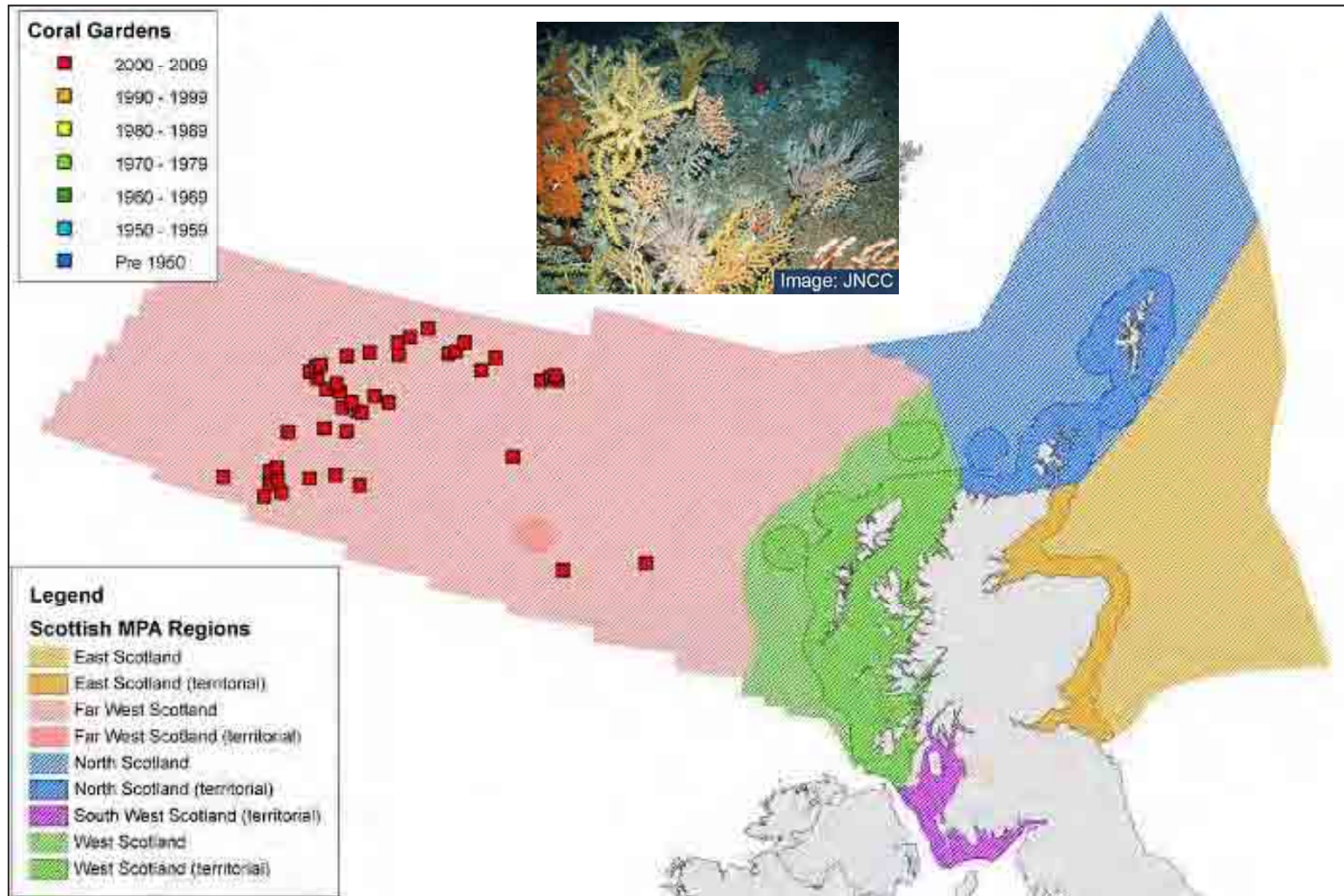
# Example: *Glossus humanus* – Heart cockle



# Example: *Atrina pectinanta* – Fan mussel



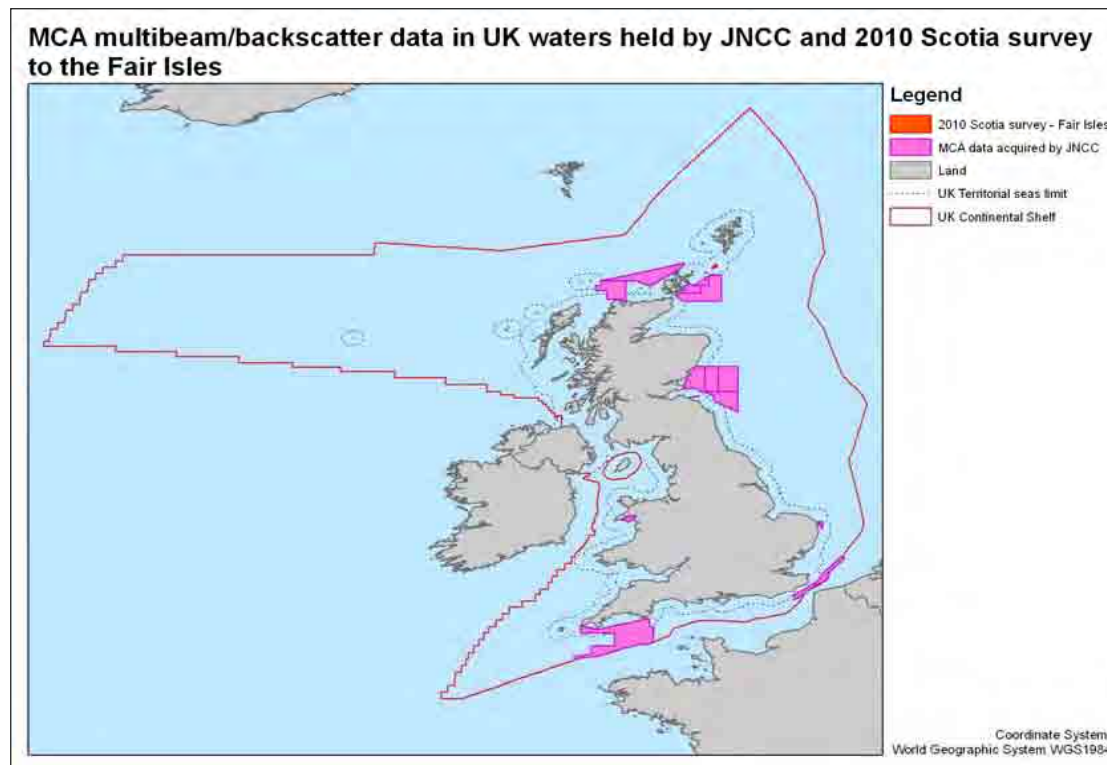
# Example: Coral gardens



# Data mining:

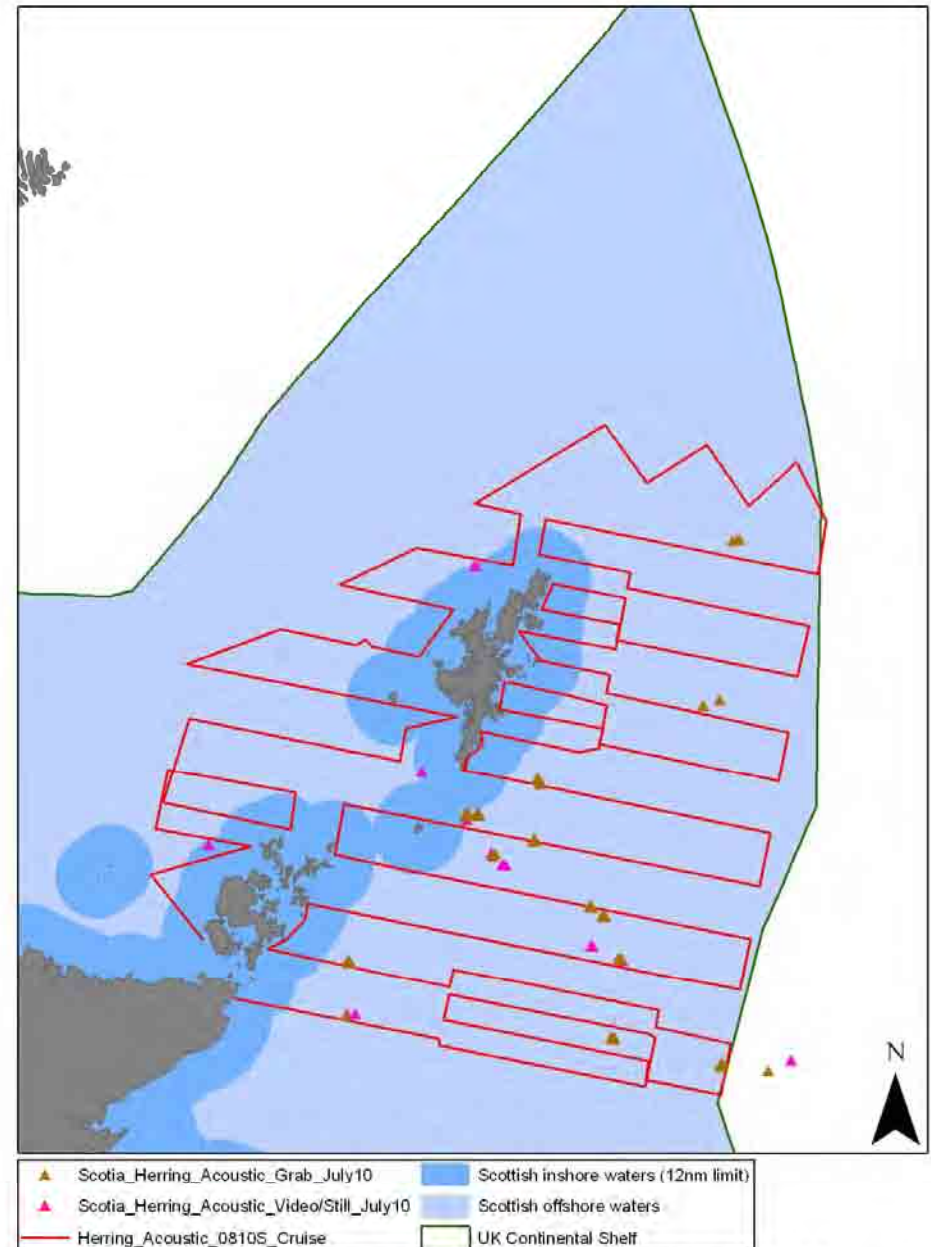
## ❑ Collaboration with research institutes

- ❑ Biotoping from Nephrops stock assessment videos
- ❑ Biotoping deep-sea ecology datasets
- ❑ Biotoping interpreted multibeam/backscatter data



# Surveys:

- ❑ SNH commissioned surveys
- ❑ Collaboration with vessel owners in Scottish waters
  - ❑ Marine Scotland Science
    - ❑ Herring acoustic surveys around the Shetland islands
  - ❑ Planning 2011 surveys



Map projected in Europe Albers Equal Area Conic (Modified Standard Parallels - Standard Parallel 1 = 50.2; Standard Parallel 2 = 58.5). The exact limits of the UK Continental Shelf are set out in orders made under section 1(7) of the Continental Shelf Act 1964 (© Crown Copyright). World Vector Shoreline © US Defense Mapping Agency. NOT TO BE USED FOR NAVIGATION. Map copyright JNCC 2010. OC-A. Version 1

## Break out session outline:

### **MPA Search Feature discussion:**

- What are we missing?

### **Potential form for MPA focussed workshop with MASTS:**

- Format?
- Who should be invited?
- When might we be able to have it?
- Advice on network principles and what ecological coherence might look like?

**Thank you for your attention**



**Oliver Crawford Avis**  
UK MPA Network Planner  
Oliver.Crawford-Avis@jncc.gov.uk  
[www.jncc.gov.uk/marineprotectedareas](http://www.jncc.gov.uk/marineprotectedareas)